

# Guajillo Hill Ranch

165± ACRES | UVALDE COUNTY, TEXAS



Texas Ranch Sales, LLC  
830.741.8906  
[Info@TexasRanchSalesLLC.com](mailto:Info@TexasRanchSalesLLC.com)  
[TexasRanchSalesLLC.com](http://TexasRanchSalesLLC.com)









**ACCESSIBLE** on over 1/3 Farm to Market Road  
140 frontage



**NATIVE BRUSH** is dense and diverse and covers  
the rolling South Texas terrain



**LAND** is versatile and undeveloped with numerous  
improvement opportunities



**ELECTRIC WELL** near the frontage on the  
southwest corner of the property



**RANCH ROADS** and gravel trails give access to  
most of the property



**ELECTRICITY** is available at the road frontage



**HIGH-FENCED** acreage with great hunting  
potential



**ABUNDANT WILDLIFE** such as Whitetail and  
dove









This 165± acre recreational hunting property is located an hour and a half west of San Antonio and less than 10 minutes south of Highway 90 in Uvalde, Texas. The ranch has over 1/3 a mile of paved Farm to Market 140 frontage.

Guajillo Hill Ranch is a versatile and undeveloped high-fenced ranch, offering endless opportunities for improvement. The rolling terrain is covered in dense and diverse South Texas brush and native grasses providing the perfect habitat for the native Whitetail deer population. Good gravel trails and roads have been carved through the brush giving access to most of the property.

There is an electric well on the southwest corner of the property, near the frontage. Electricity is accessible, and there are many ideal home or cabin sites throughout the property.

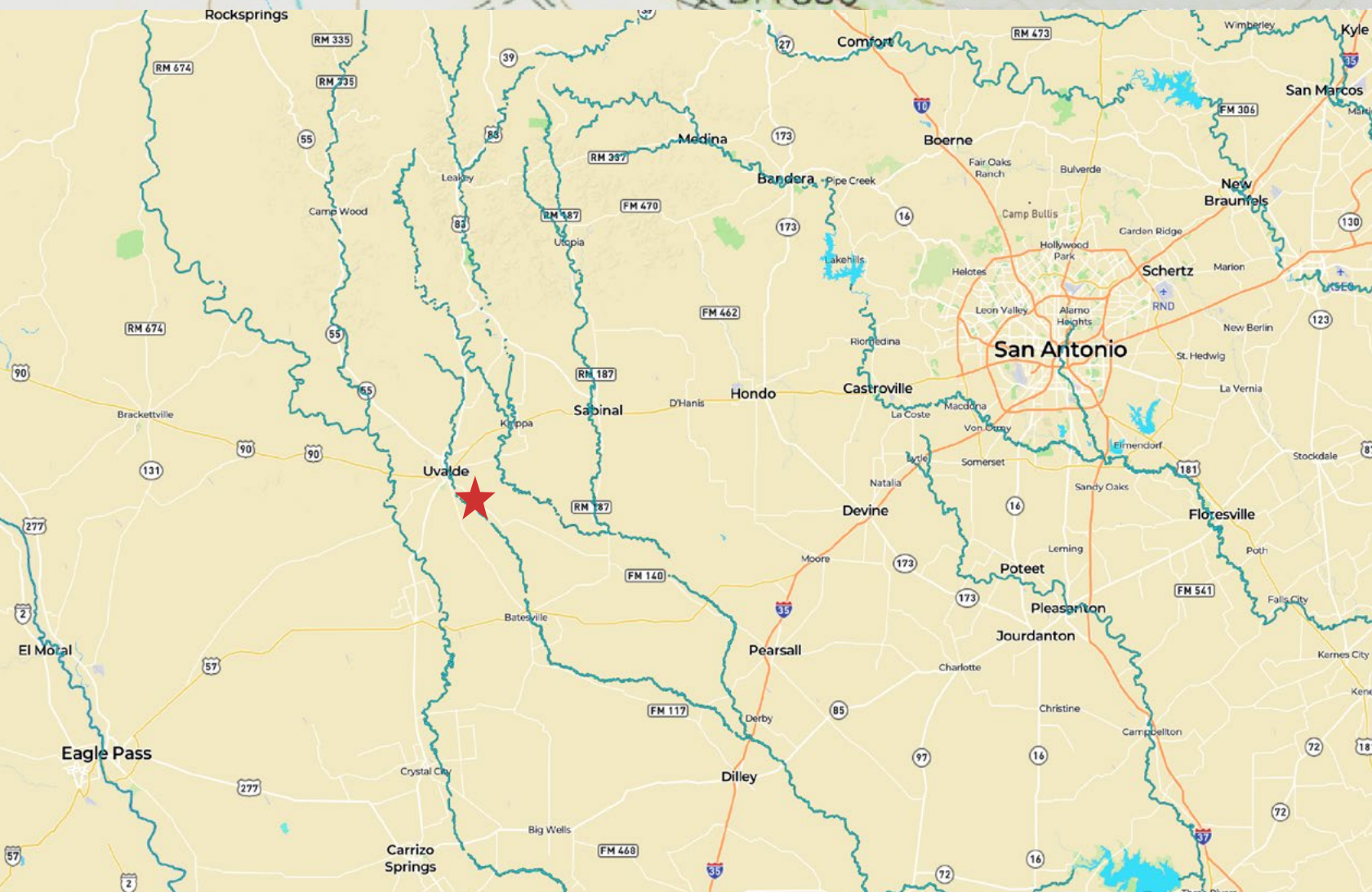
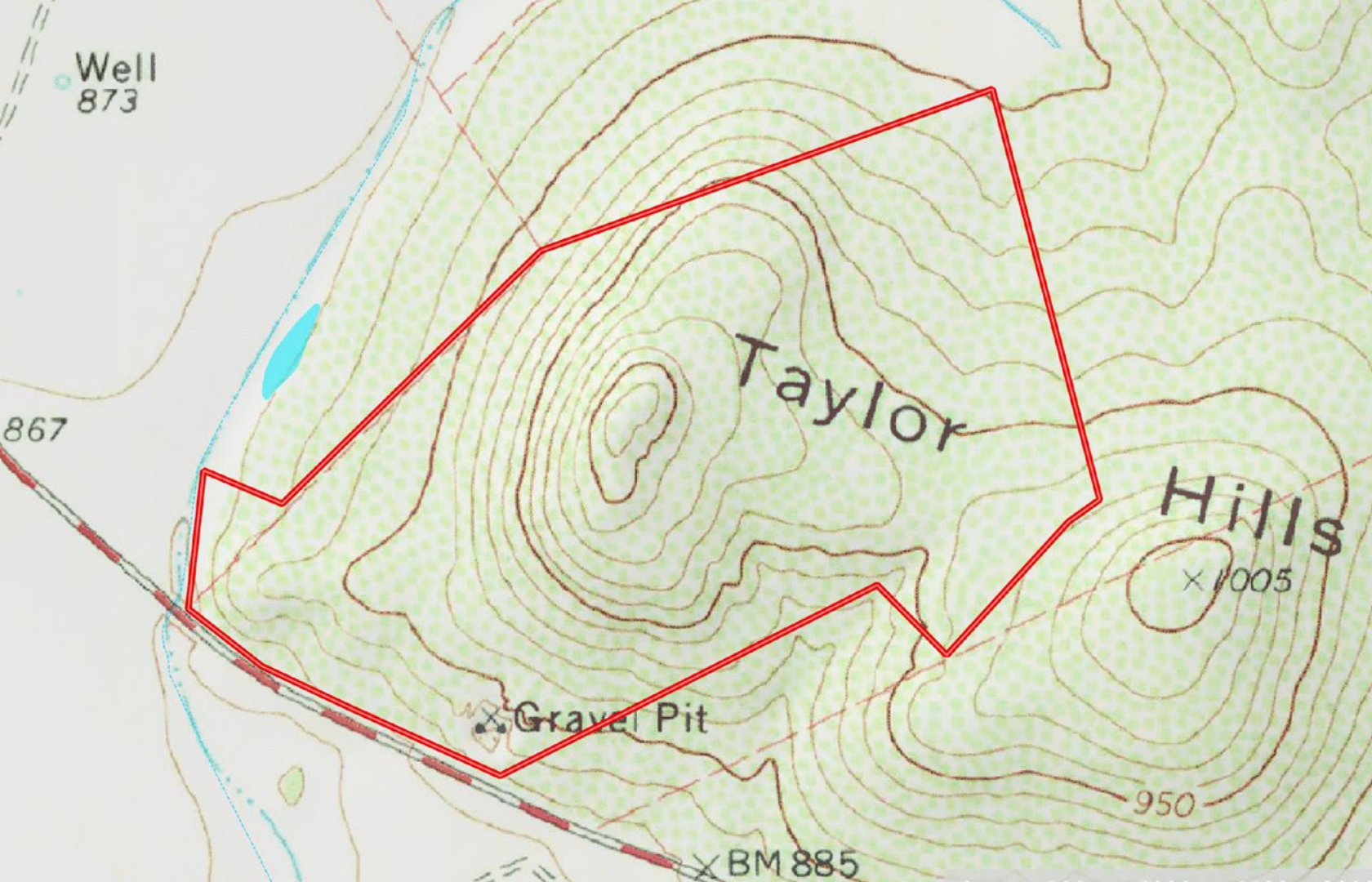
The Guajillo Hill Ranch is an outstanding opportunity for the serious outdoor enthusiast and hunter looking to create the perfect weekend getaway or hunting destination.















# DAVE WILCOX

*San Antonio, Texas*

210.269.4161

DWilcox@TexasRanchSalesLLC.com



Shown by appointment only with Texas Ranch Sales, LLC. Buyers brokers must be identified on first contact and must accompany buying prospect on first showing to be allowed full fee participation. If this condition is not met, fee participation will be at the sole discretion of Texas Ranch Sales, LLC.

**TEXASRANCHSALESLLC.COM**

**830.741.8906**

## Complex ranch financing made simple.

**Relationship driven. Customer owned.**

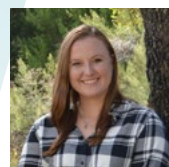
Capital Farm Credit has the flexibility to handle everything from small country purchases to large, complex ranch loans. We provide custom lending solutions with flexible fixed rate options. As a cooperative, we returned more than \$750 million back to customers over the past decade. Partner with the premier lender.



**Jeremy Lightfoot**  
NMLS612457



**Laura Martinez**  
NMLS835200



**Kasey Sorrells**  
NMLS1663468



**Together we're better.**  
**Partnership that really pays.**

Disclaimer: Although the Broker or Agent has used reasonable care in obtaining data, this material is submitted without representation, warranty, or guarantees, and is subject to errors and omissions. Moreover, all information is subject to changes by the owner as to price or terms, to prior lease, to withdrawal of the property from the market, and to other events beyond the control of the Broker.