

Tapones Ranch

640± ACRES | WEBB COUNTY, TEXAS



Texas Ranch Sales, LLC

830.741.8906

Info@TexasRanchSalesLLC.com

TexasRanchSalesLLC.com





🇹🇽 LOCATED 7± MILES FROM AGUILARES

🇹🇽 TWO EARTHEN TANKS

🇹🇽 GATED ENTRANCE ON FARM TO MARKET
2895

🇹🇽 ELECTRICITY PROVIDED BY MEDINA
ELECTRIC

🇹🇽 30± MINUTES FROM TWO AIRPORTS

🇹🇽 GOOD RANCH ROADS AND SENDEROS

🇹🇽 LOW-FENCED WITH GREAT SOUTH TEXAS
BRUSH

🇹🇽 GREAT HUNTING OPPORTUNITIES





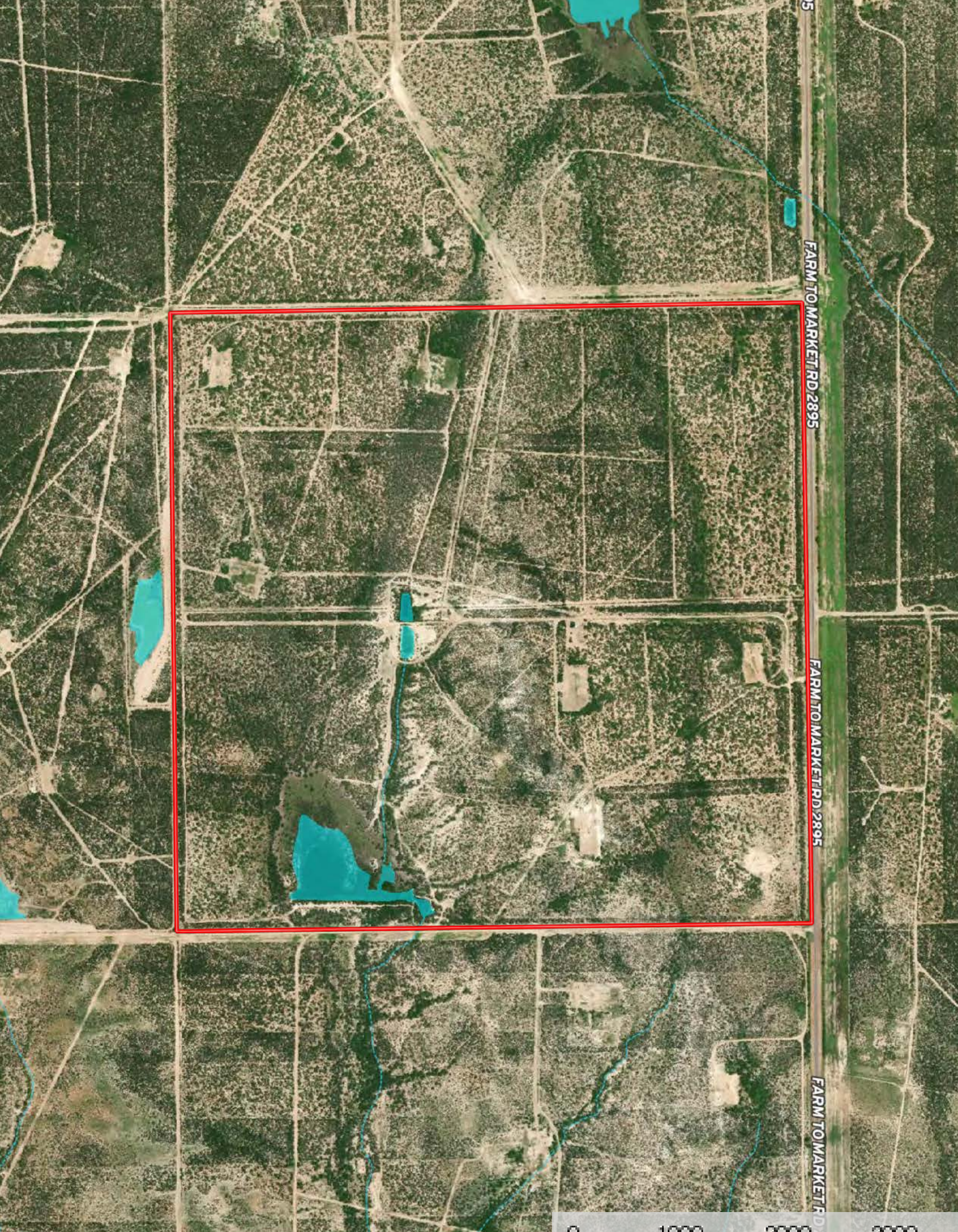
Located just seven miles north of Aguilares, Texas, this 640± acre ranch for sale in Webb County is a great hunting, cattle, and recreational ranch that is a special opportunity for a discerning ranch buyer. The Tapones Ranch is centrally located 30± minutes from the Jim Hogg County Airport in Hebbronville, 35± minutes from the Laredo International Airport, and 35± minutes to Freer.

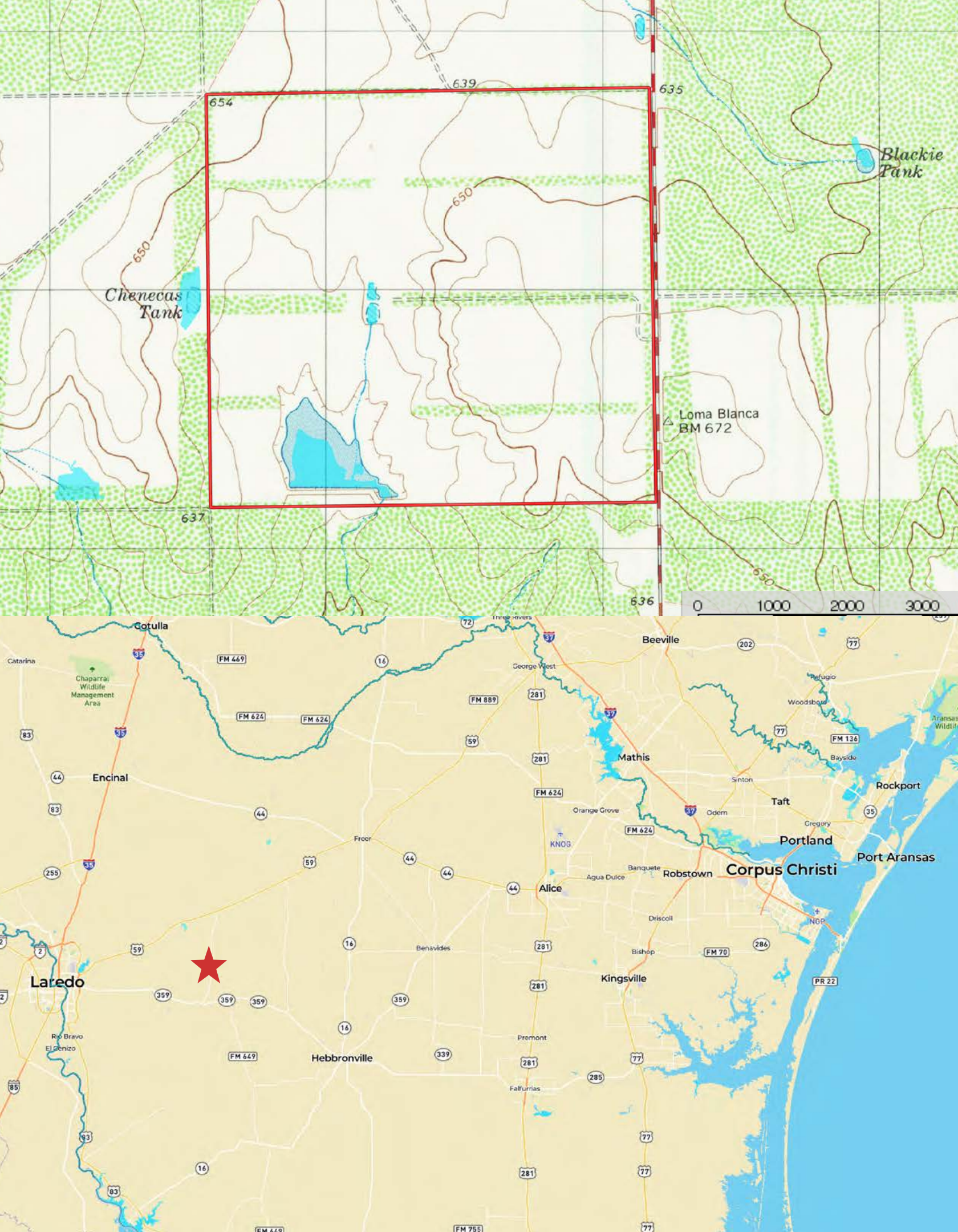
The ranch has about a mile of frontage on Farm to Market 2895 with gated entrance that leads into the property. Miles of caliche ranch roads and trails stretch out across every part of the acreage with senderos that cut through the property with hunting in mind. The rolling South Texas landscape is low-fenced and covered with areas of dense and diverse high protein brush that provide ideal forage and cover to the ranch's Whitetail, quail, and dove.

There are two earthen tanks that offer water to the wildlife and livestock on the property. Single phase electricity is available at the road frontage via Medina Electric.

Tapones ranch is an amazing opportunity for any ranch buyer, surrounded by large landowners with excellent urban proximity, great topography with views for miles, water, and ideal forage for livestock and wildlife. The options for this property are many: a private getaway and hunting retreat, cattle ranch, or an impressive place to build a dream home.









DINO SMITH

956.763.0884

Dsmith@TexasRanchSalesLLC.com



Shown by appointment only with Texas Ranch Sales, LLC. Buyers brokers must be identified on first contact and must accompany buying prospect on first showing to be allowed full fee participation. If this condition is not met, fee participation will be at the sole discretion of Texas Ranch Sales, LLC.

TEXASRANCHSALESLLC.COM

830.741.8906

Complex ranch financing made simple.

Relationship driven. Customer owned.

Capital Farm Credit has the flexibility to handle everything from small country purchases to large, complex ranch loans. We provide custom lending solutions with flexible fixed rate options. As a cooperative, we returned more than \$750 million back to customers over the past decade. Partner with the premier lender.



LEO A. RODRIGUEZ 956.753.0758

NMLS612381

 capitalfarmcredit.com | NMLS493828



Together we're better.
Partnership that really pays.

Disclaimer: Although the Broker or Agent has used reasonable care in obtaining data, this material is submitted without representation, warranty, or guarantees, and is subject to errors and omissions. Moreover, all information is subject to changes by the owner as to price or terms, to prior lease, to withdrawal of the property from the market, and to other events beyond the control of the Broker.